

# Rittal – The System.

Faster – better – everywhere.

## ► Support section CP 120 Open – CP 6212.110

Date : Feb 4, 2019

ENCLOSURES

POWER DISTRIBUTION

CLIMATE CONTROL

IT INFRASTRUCTURE

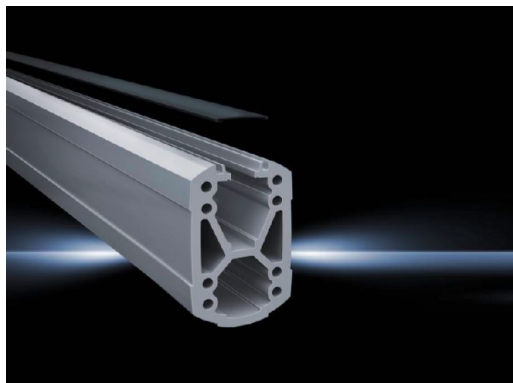
SOFTWARE & SERVICES

FRIEDHELM LOH GROUP



# Support section CP 120 Open – CP 6212.110

created: 04.02.2019 build on [www.rittal.com/uk-en](http://www.rittal.com/uk-en)



## Product description

<b>Description:</b>	Attachment to the connection components with 4 self-tapping screws in the screw channel. May be cut to any required length, no thread-tapping required. Open cable duct for easy servicing access and for pre-assembled cables with connectors; lockable via cover section. X-shaped profiling for greater load capacity, large cable routing channels. Upper channel adequate for cables with large connectors (e.g. DVI or VGA) and available/usable throughout the entire system.
<b>Material:</b>	Support section: Extruded aluminium section Cover: Plastic
<b>Colour:</b>	Support section: RAL 7035 Cover: RAL 7024
<b>Supply includes:</b>	Support section Clip-in lid

## Product features

<b>Dimensions:</b>	Width: 75 mm Height: 120 mm
<b>Length:</b>	1000 mm
<b>Packs of:</b>	1 pc(s).
<b>Weight/pack:</b>	9.2 kg
<b>EAN:</b>	4028177683976
<b>Customs tariff</b>	76042100

**number:**

---

**ETIM 6.0:** EC000882

---

**ETIM 5.0:** EC000882

---

**eCl@ss 8.0/8.1:** 27400556

---

**eCl@ss 7.0/7.1:** 27189261

---

**eCl@ss 6.0/6.1:** 27189261

---

**eCl@ss 5.1/5.1.4:** 27189248

---

**Product description:** CP Support section CP 120, open, L: 1000 mm

---

## Approvals

---

**Declarations:** Manufacturer's declaration

---